



Kings Meadow

IRVINE

AN EXCITING DEVELOPMENT OF
3, 4 & 5 BEDROOM HOMES



Great Location Desirable Homes

This way to find out all about what Dawn Homes have in mind for your new home
KINGS MEADOW OFFERS A SELECTION OF BEAUTIFULLY APPOINTED HOMES





LOCAL FACILITIES

Shopping choice is wide and varied with supermarkets, lots of privately owned traditional shops and many specialist outlets. Many families in the area enjoy an occasional trip to the huge Silverburn Shopping Centre which is only half an hour away by car. The Harbour Arts Centre has hosted many touring productions as well as live music and exhibitions. Health services are first class with ample provision. Ayrshire Central Hospital, also known as Irvine Central Hospital, is the main local hospital and in addition there are GP Practices, Dental Practices and Opticians.

KINGS MEADOW, IRVINE. AN EXCITING DEVELOPMENT OF BEAUTIFUL NEW HOMES IN A WONDERFUL SETTING.

OUT AND ABOUT

There is absolutely no shortage of recreational choice in this part of Scotland. Although golf was invented on the other side of the country, Ayrshire boasts golf courses everywhere, some of them world famous. Football, rugby, hockey, indeed every type of team sport is played here, at all levels, along with tennis, cycling, walking, athletics, sailing, swimming, bowls, the list could go on. This is very much a 'fresh air' part of the country and there is every encouragement to enjoy its benefits.





EDUCATION

The wonderful thing about being within easy reach of a busy, long established coastal town, is the access to everything the family needs, including education. Primary and secondary schools with a very good reputation are easily accessible from Kings Meadow, further education is well established locally and the excellent transport links connect residents to the central belt. Glasgow, Scotland's largest city, with all its world renowned universities, colleges and schools, is less than an hour away by car or by train.

Dawn Homes design and build superb family homes and, equally important, they build them where people want to live. Kings Meadow, their latest development in Ayrshire, is another fine example of the right homes in exactly the right place. When complete, Kings Meadow will have 12 different house styles ranging from 3, 4 and 5 bedrooms with semi detached and detached choices. It will be a stunning new community in this very desirable area. Everything is right on your doorstep and transport links are excellent. Irvine might be a new town but it is an ancient town with a very real history and very well established amenities of every type. Kings Meadow is another delightful Dawn Homes development where families will enjoy life in the country while just minutes from all the facilities that are important. It couldn't be easier to contact us using our website, www.dawn-homes.co.uk and our development consultants will answer all your questions. We look forward to showing you how much there is to offer.

KINGS MEADOW

For many people a house move involves a relatively short distance, in most cases just a few miles. If however you are a newcomer to the area, welcome to a part of Scotland famed for its beauty and its history. Kings Meadow is set amidst the green fields of Ayrshire. When you arrive to see this wonderful development of 3, 4 and 5 bedroom homes the very first thing you'll notice is the air. Fresh, clean, Ayrshire countryside and, when the wind is right, a hint on the breeze that the sea is not so far away. Kings Meadow invites the family to live and grow in the country, while missing none of the facilities of town life. See it for yourself.



GET MOVING

WITH OUR ASSISTED MOVE SERVICE

At Dawn Homes we will do everything we can to help you move with the absolute minimum of stress or worry. Our team are experts on Assisted Move and we are with you helping you every step of the way, taking care of the detail and ensuring that you and your family's interests are the priority.

We can assist you with the marketing of your current home and pay the marketing fees. Here's how it works:

1

Talk to our friendly Development Consultant at your chosen development.

2

We will arrange two independent valuations and agree a price at which to market your home.

3

You can choose which agent will market your property.

4

We will arrange to have a Home Report carried out on your current home and organise the marketing through your preferred nominated estate agent.

5

Your preferred new Dawn home will be held for four weeks once marketing of your current home has commenced, with a weekly review thereafter.

Visit our website www.dawn-homes.co.uk and choose get-moving. And you will.



Beautifully built homes and superbly designed developments have given Dawn Homes their respected and award-winning reputation. Established in 1984, Dawn Homes developments across Central Scotland and Ayrshire have set new standards of excellence. Visit one of the show homes and see the difference for yourself.



We pride ourselves in providing the highest quality homes, with a customer service to match. From reservation through to the day you move in, and beyond, our Directors and staff will be on hand to help you every step of the way.

Our Customer Care is second to none - we provide fast, efficient service, seven days a week, and for up to two years after you have moved into your new home.

Kings Meadow

IRVINE



Kings Meadow | **DEVELOPMENT PLAN** IRVINE

As the name suggests, this was farmland set in an area with a very real history. The site plan will show you that Dawn Homes have again demonstrated their determination to build more than just a collection of new homes. Kings Meadow will enhance this popular area and, when complete, will be just as pleasing to the eye as it will be to live in one of the beautiful new properties. With no fewer than 12 different house styles Kings Meadow will prove to be a wonderful family investment. The standards of craftsmanship will match the talent of the architects and designers as will the quality of the fittings. Beautiful homes, in the perfect place.



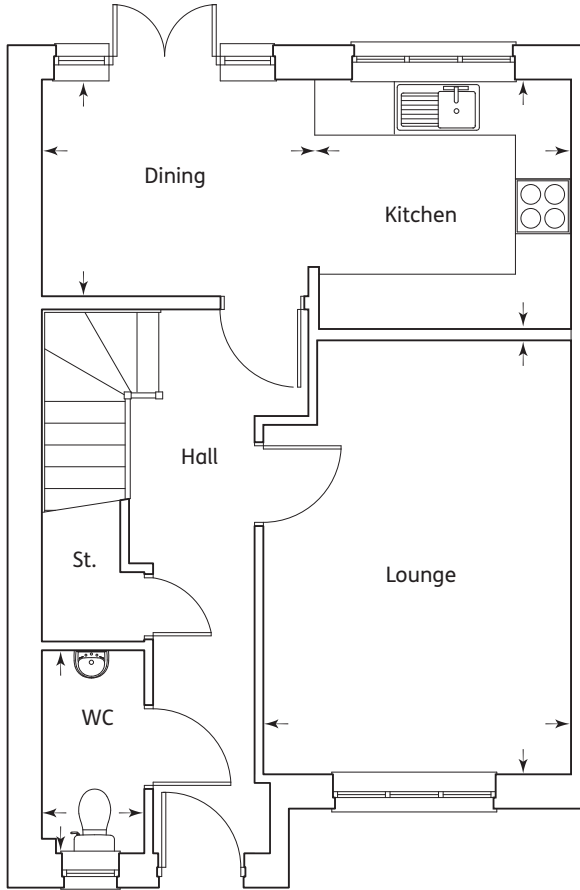


Sat Nav ref for Kings Meadow is KA11 2AY

EPC Rating



The Carrick – 963 sq ft 89.5 sqm

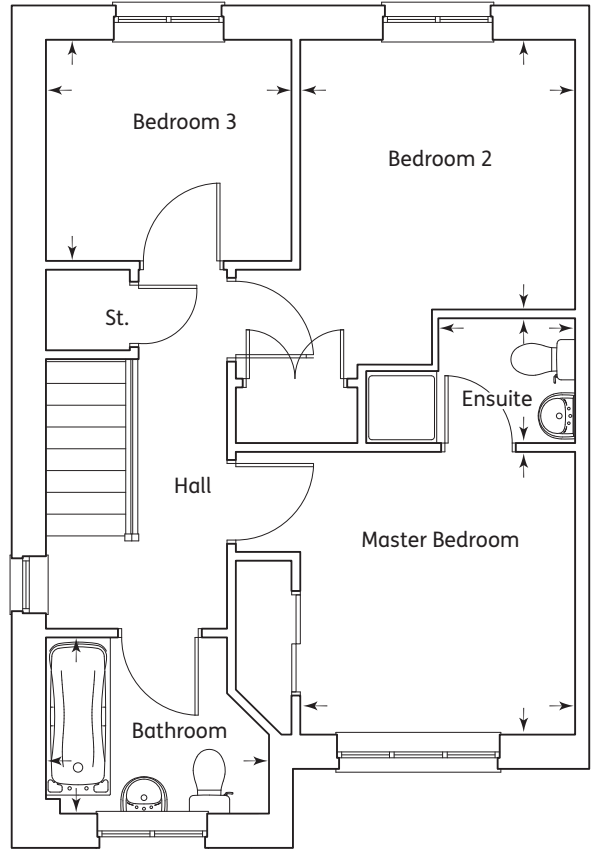


Ground Floor

Kitchen	2.76m x 2.68m	9'0" x 8'9"
Dining	2.90m x 2.35m	9'6" x 7'8"
Lounge	4.68m x 3.31m	15'4" x 10'10"
WC	2.18m x 1.10m	7'2" x 3'7"

First Floor

Master Bedroom	2.99m x 2.82m	9'10" x 9'3"
Ensuite	1.37m x 1.35m	4'6" x 4'5"
Bedroom 2	2.96m x 2.96m	9'8" x 9'8"
Bedroom 3	2.64m x 2.38m	8'8" x 7'9"
Bathroom	2.44m x 1.89m	8'0" x 6'2"

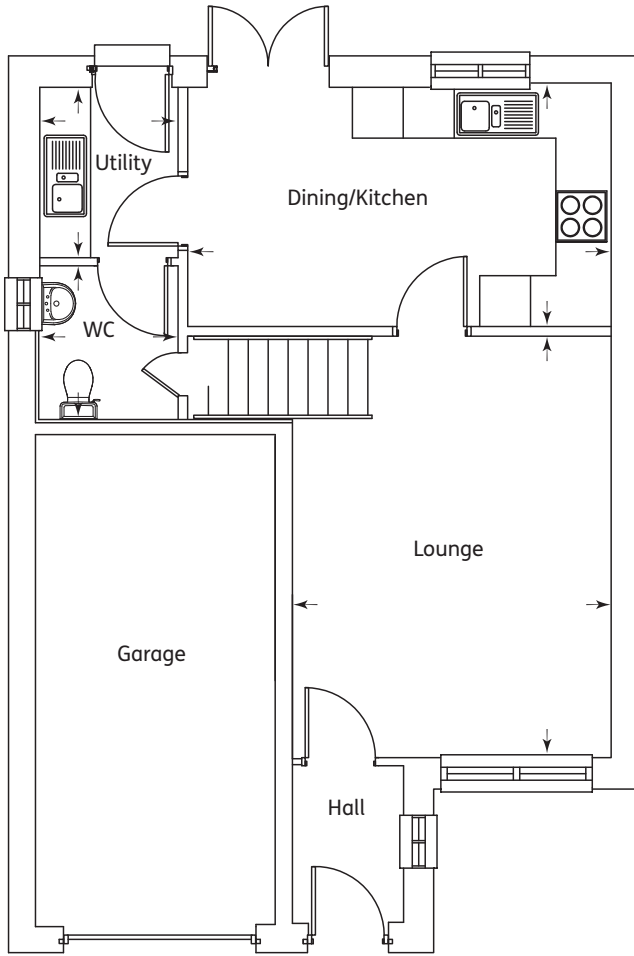


The Carrick
3 Bedroom Home

EPC Rating



The Cromarty – 1064 sq ft 98.9 sqm

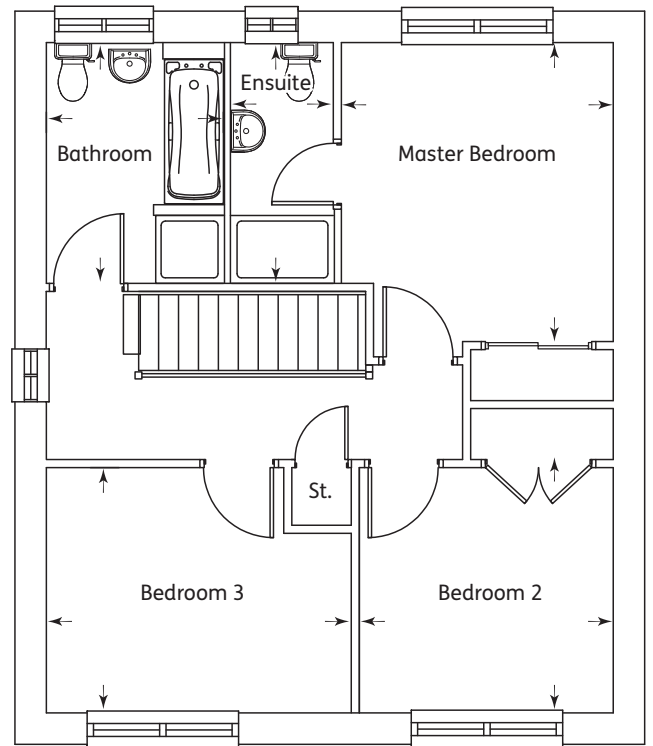


Ground Floor

Dining/Kitchen	4.94m x 2.82m	16'2" x 9'3"
Lounge	4.96m x 3.69m	16'3" x 12'1"
Utility	2m x 1.83m	6'7" x 6'0"
WC	1.83m x 1.8m	6'0" x 5'11"

First Floor

Master Bedroom	3.52m x 3.2m	11'6" x 10'6"
Ensuite	2.85m x 1.2m	9'4" x 3'11"
Bedroom 2	2.99m x 2.89m	9'10" x 9'6"
Bedroom 3	3.79m x 2.89m	12'5" x 9'6"
Bathroom	2.83m x 2.29m	9'3" x 7'6"

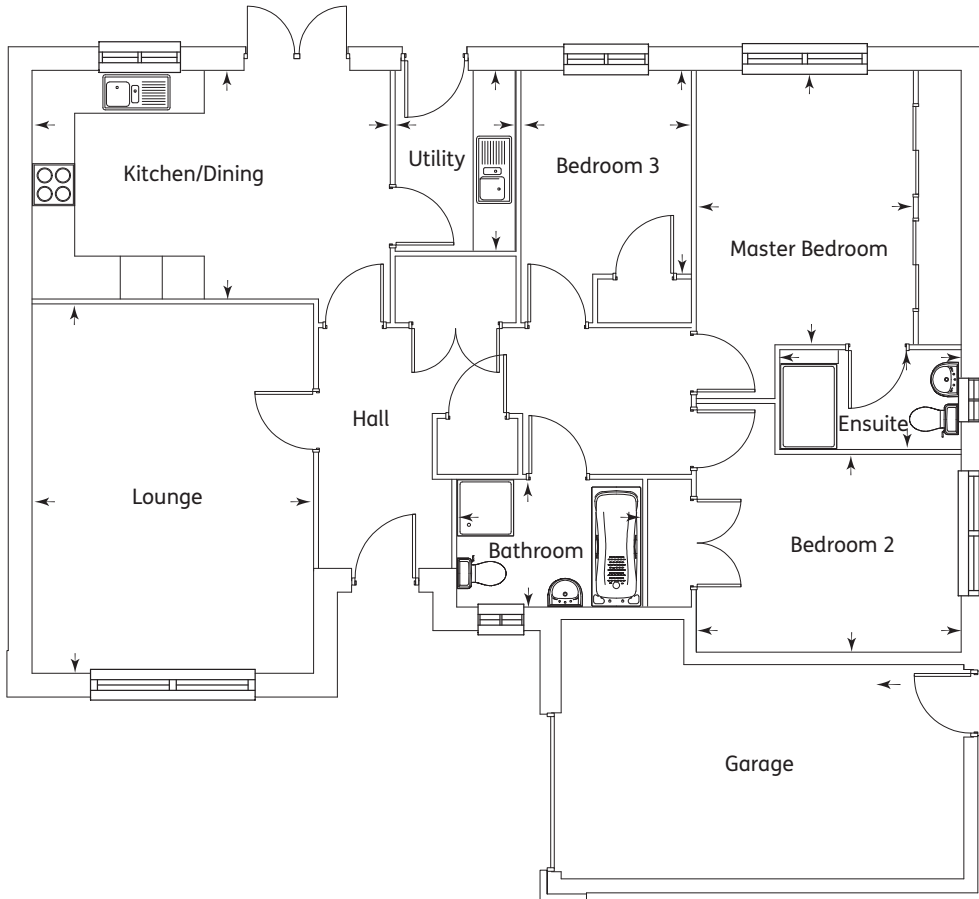


The Cromarty
3 Bedroom Home



Ground Floor

Kitchen/Dining	5.09m x 3.24m	16'8" x 10'7"
Lounge	5.25m x 4.00m	17'2" x 13'1"
Utility	2.56m x 1.70m	8'4" x 5'7"
Master Bedroom	3.89m x 3.07m	12'9" x 10'1"
Ensuite	2.56m x 1.40m	8'5" x 4'7"
Bedroom 2	3.76m x 2.80m	12'4" x 9'2"
Bedroom 3	2.88m x 2.41m	9'5" x 7'11"
Bathroom	2.63m x 1.80m	8'7" x 5'11"

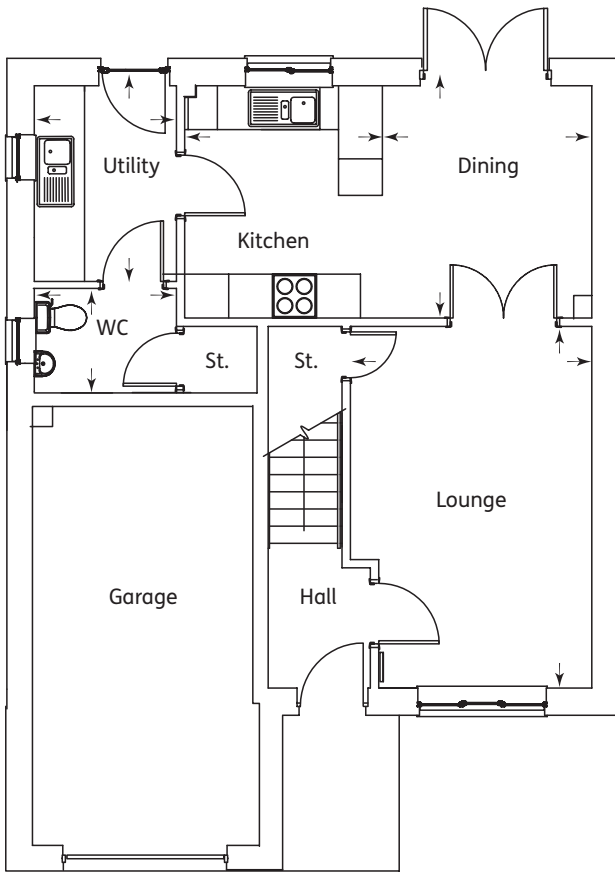


The Carron
3 Bedroom Home

EPC Rating



The Leven – 1213 sq ft 113 sqm

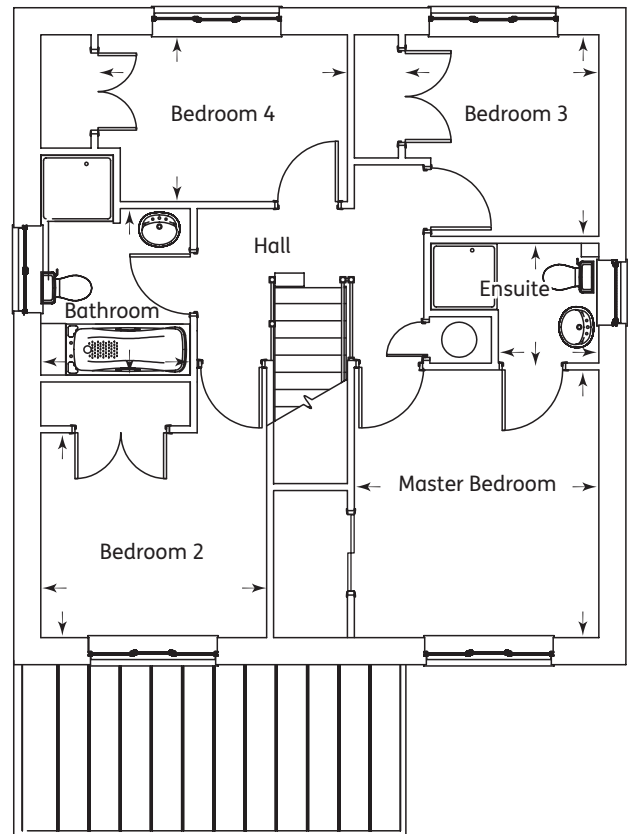


Ground Floor

Kitchen	3.17m x 2.7m	10'5" x 8'10"
Dining	3.17m x 2.86m	10'5" x 9'4"
Lounge	4.94m x 3.29m	16'2" x 10'9"
Utility	2.67m x 1.94m	8'9" x 6'4"
WC	1.94m x 1.42m	6'4" x 4'8"

First Floor

Master Bedroom	3.69m x 3.34m	12'1" x 10'11"
Ensuite	1.6m x 1.37m	5'3" x 4'6"
Bedroom 2	3.08m x 2.8m	10'1" x 9'2"
Bedroom 3	2.75m x 2.65m	9' x 8'8"
Bedroom 4	3.4m x 2.27m	11'2" x 7'5"
Bathroom	2.27m x 2.04m	7'5" x 6'8"

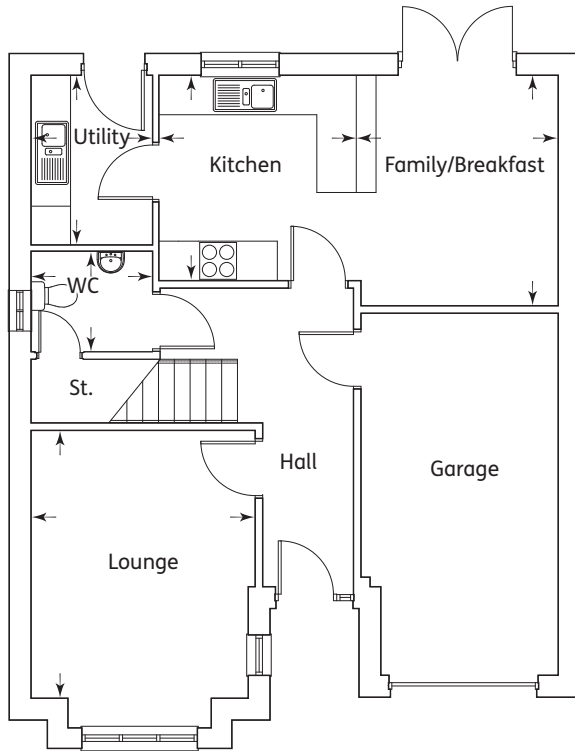


The Leven
4 Bedroom Home

EPC Rating



The Etive – 1346 sq ft 123 sqm

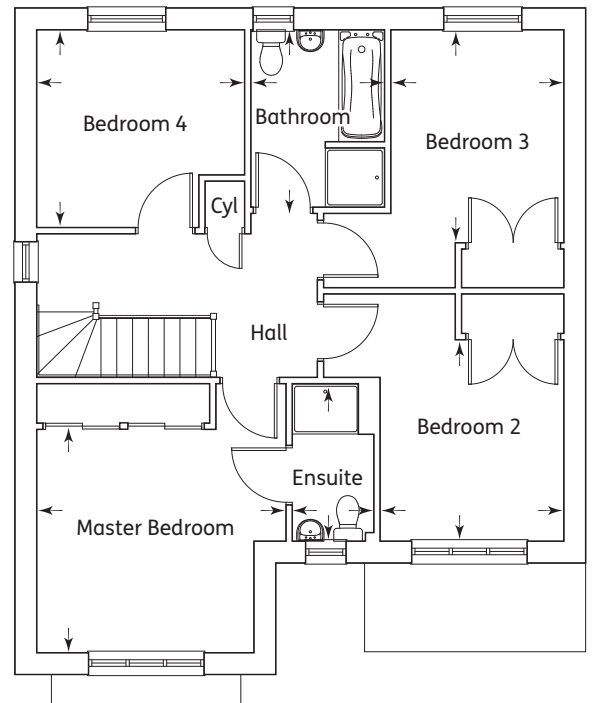


Ground Floor

Kitchen	3.03m x 3.03m	10'10" x 9'11"
Family/Breakfast	3.46m x 2.85m	11'4" x 9'4"
Lounge	4.32m x 3.37m	14'2" x 11'1"
Utility	2.50m x 2.01m	8'2" x 6'7"
WC	2.01m x 1.51m	6'7" x 4'11"

First Floor

Master Bedroom	3.65m x 3.37m	11'11" x 11'1"
Ensuite	2.35m x 1.23m	7'8" x 4'1"
Bedroom 2	3.02m x 2.88m	9'11" x 9'5"
Bedroom 3	3.19m x 2.71m	10'6" x 8'11"
Bedroom 4	3.11m x 2.96m	10'2" x 9'8"
Bathroom	2.71m x 2.02m	8'11" x 6'8"

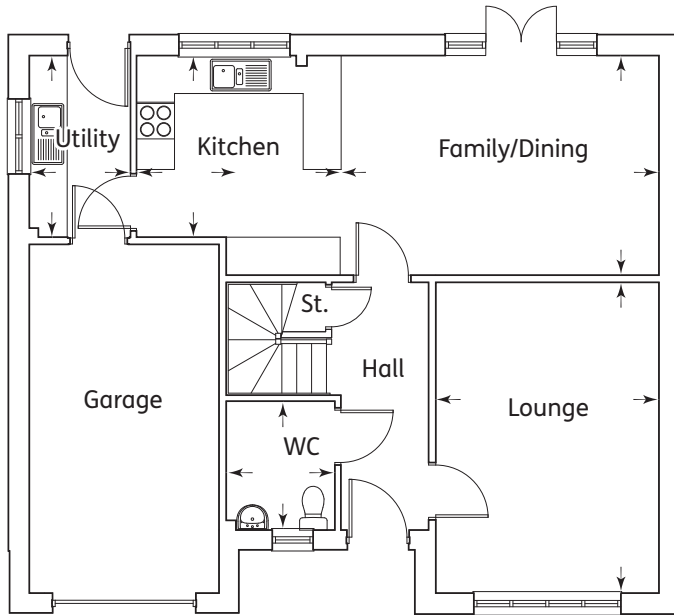


The Etive
4 Bedroom Home

EPC Rating



The Dochart – 1585 sq ft 147 sqm

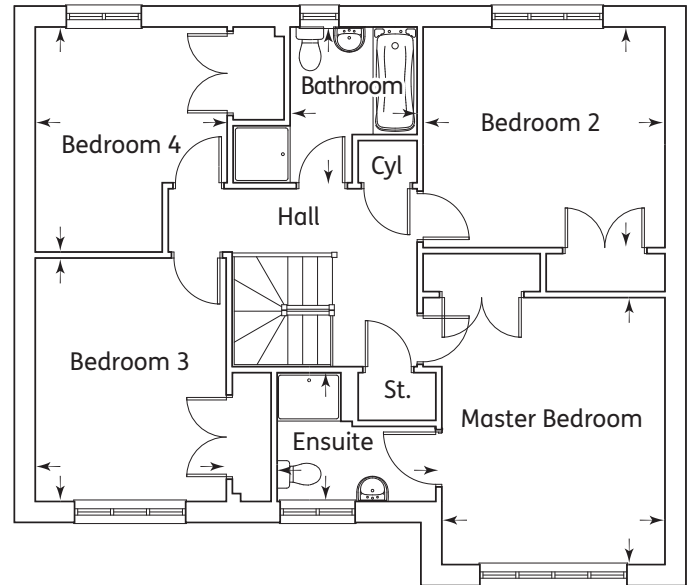


Ground Floor

Kitchen	3.24m x 2.85m	10'7" x 9'4"
Family/Dining	4.93m x 3.47m	16'2" x 11'4"
Lounge	4.92m x 3.44m	16'1" x 11'3"
Utility	2.85m x 1.72m	9'4" x 5'8"
WC	1.87m x 1.71m	6'2" x 5'7"

First Floor

Master Bedroom	4.22m x 3.44m	13'10" x 11'3"
Ensuite	2.54m x 1.87m	8'4" x 6'2"
Bedroom 2	3.78m x 3.49m	12'4" x 11'5"
Bedroom 3	3.85m x 3.1m	12'7" x 10'2"
Bedroom 4	3.56m x 3.12m	11'8" x 10'2"
Bathroom	2.42m x 2.08m	7'11" x 6'10"

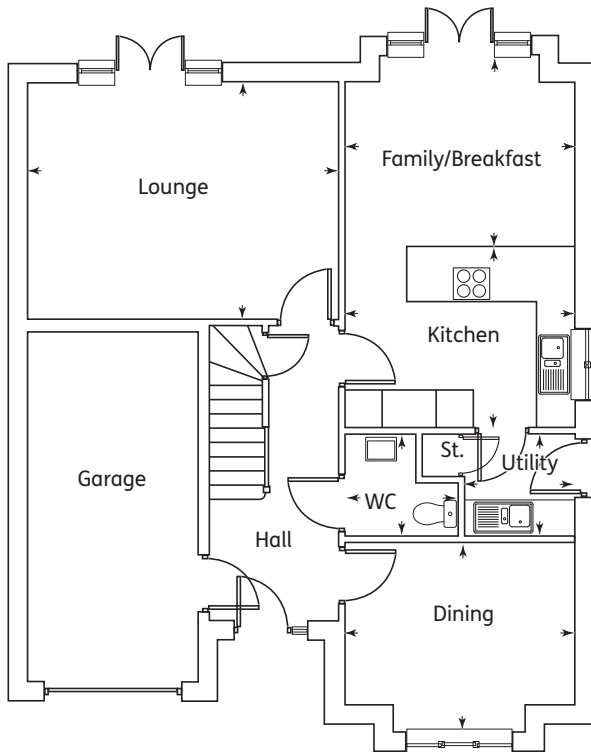


The Dochart
4 Bedroom Home

EPC Rating



The Tummel – 1700 sq ft 156 sqm

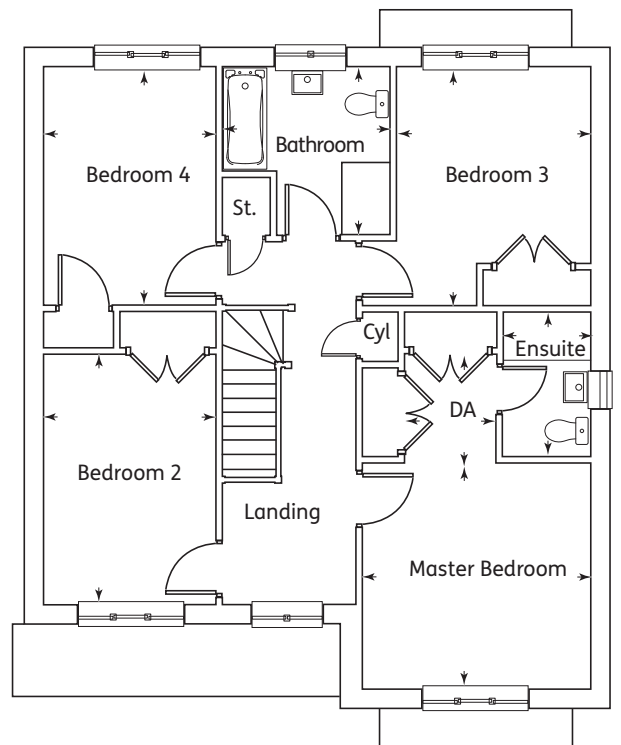


Ground Floor

Kitchen	3.73m x 2.97m	12'3" x 9'9"
Family/Breakfast	3.73m x 3.13m	12'3" x 10'3"
Dining	3.79m x 2.65m	12'5" x 8'8"
Lounge	5.10m x 3.87m	16'8" x 12'8"
Utility	1.79m x 1.70m	5'10" x 5'7"
WC	1.85m X 1.70m	6'1" x 5'7"

First Floor

Master Bedroom	3.73m x 3.70m	12'3" x 12'1"
Dressing Area	1.79m x 1.42m	5'10" x 5'1"
Ensuite	2.39m x 1.42m	7'10" x 4'8"
Bedroom 2	4.11m x 2.82m	13'5" x 9'3"
Bedroom 3	3.22m x 3.17m	10'6" x 10'5"
Bedroom 4	3.91m x 2.82m	12'10" x 9'3"
Bathroom	2.75m x 2.75m	9'1" x 9'0"

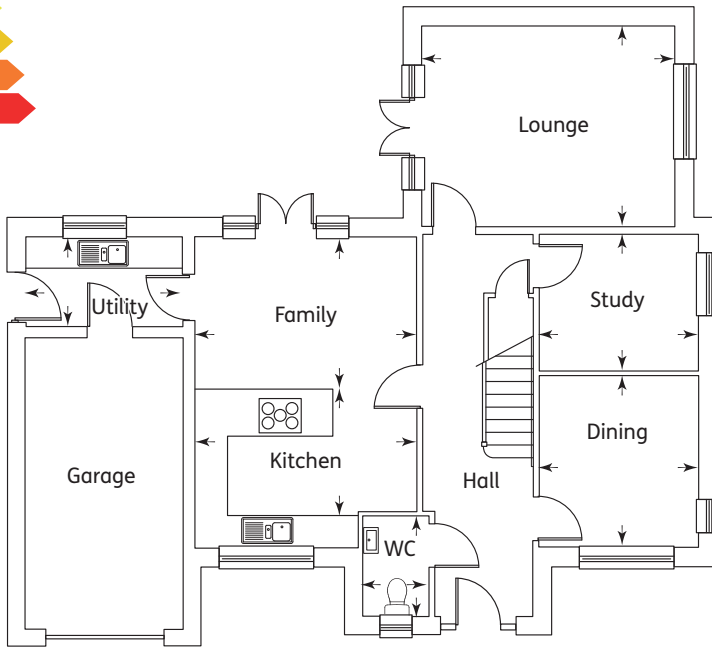


The Tummel
4 Bedroom Home

EPC Rating



The Ness – 1764 sq ft 164 sqm

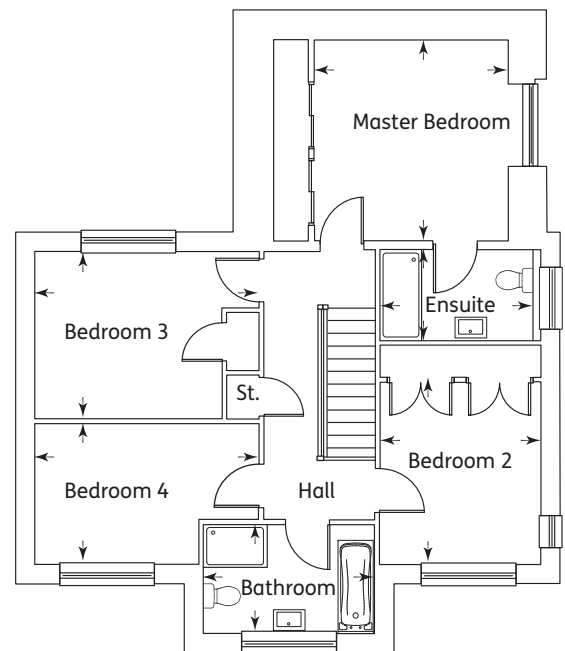


Ground Floor

Kitchen	4.20m x 3.01m	13'9" x 9'10"
Family	4.20m x 2.89m	13'9" x 9'6"
Dining	3.25m x 3.01m	10'8" x 9'11"
Lounge	4.78m x 3.79m	15'8" x 12'5"
Study	3.01m x 2.54m	9'10" x 8'4"
Utility	2.95m x 1.70m	9'8" x 5'7"
WC	1.90m x 1.24m	6'3" x 4'1"

First Floor

Master Bedroom	3.79m x 3.67m	12'5" x 12'0"
Ensuite	3.03m x 1.71m	9'11" x 5'7"
Bedroom 2	3.43m x 3.03m	11'3" x 9'11"
Bedroom 3	3.52m x 3.15m	11'6" x 10'4"
Bedroom 4	4.23m x 2.65m	13'10" x 8'8"
Bathroom	3.22m x 2.04m	10'7" x 6'8"

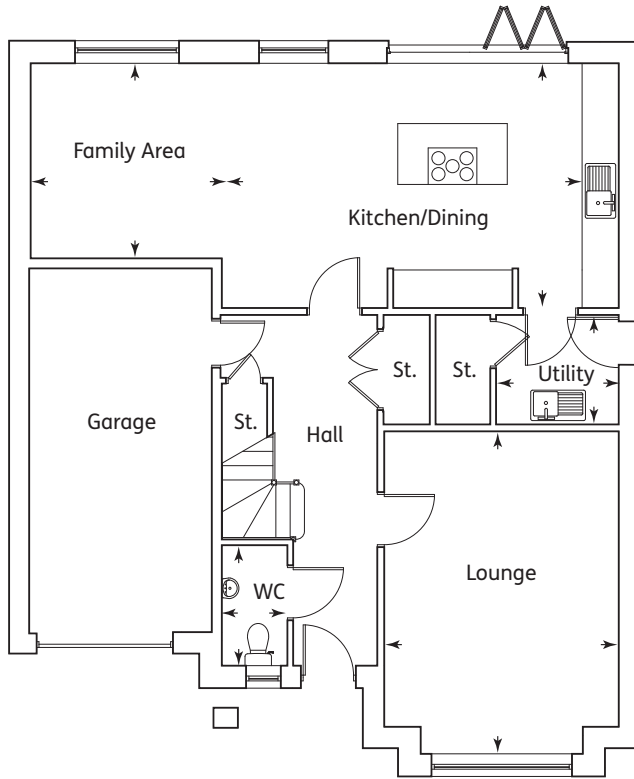


The Ness
4 Bedroom Home

EPC Rating



The Helmsdale – 1912 sq ft 178 sqm

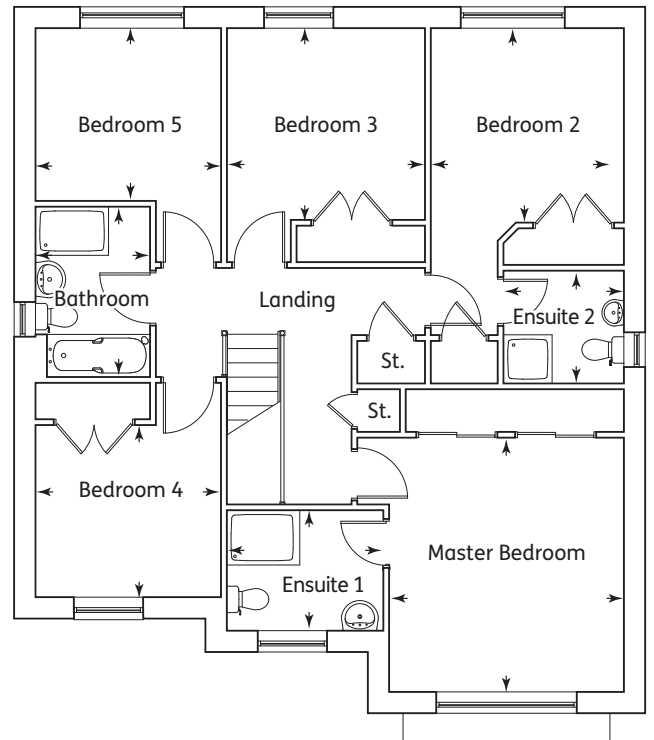


Ground Floor

Kitchen/Dining	6.56m x 4.02m	21'5" x 13'2"
Family Area	3.19m x 3.14m	10'6" x 10'3"
Lounge	4.85m x 3.86m	15'11" x 12'8"
WC	1.90m x 1.22m	6'3" x 3'8"
Utility Room	2.01m x 1.80m	6'7" x 5'11"

First Floor

Master Bedroom	4.18m x 3.86m	13'8" x 12'8"
Ensuite 1	2.57m x 1.88m	8'5" x 6'2"
Bedroom 2	3.18m x 3.19m	10'5" x 10'6"
Ensuite 2	1.98m x 1.85m	6'6" x 6'1"
Bedroom 3	3.25m x 3.15m	10'8" x 10'4"
Bedroom 4	3.09m x 2.83m	10'1" x 9'3"
Bedroom 5	3.13m x 2.84m	10'3" x 9'3"
Bathroom	2.80m x 1.96m	9'2" x 6'5"

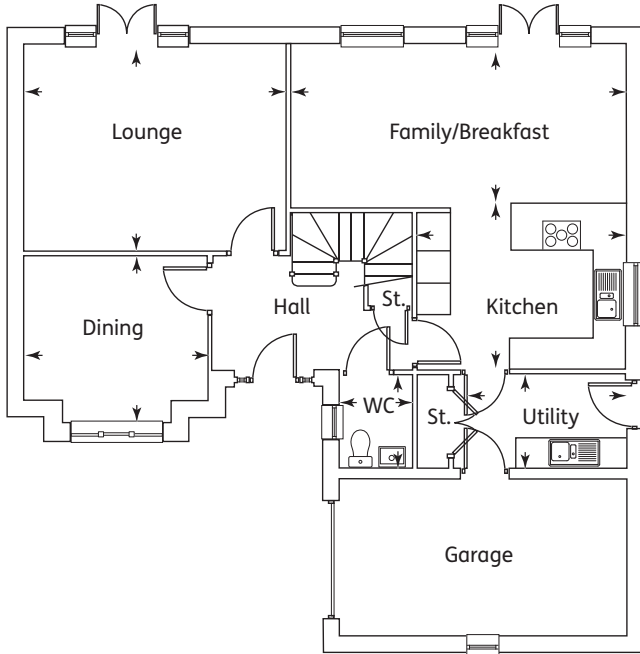


The Helmsdale

5 Bedroom Home

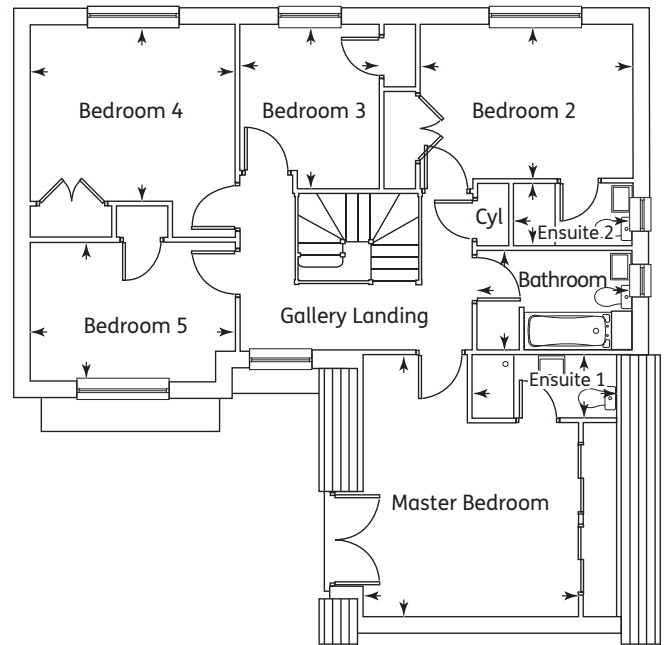


Ground Floor



Kitchen	3.97m x 3.10m	13'0" x 10'2"
Dining	3.48m x 2.74m	11'5" x 9'0"
Family/Breakfast	6.40m x 3.10m	20'11" x 10'2"
Lounge	4.99m x 3.92m	16'4" x 12'10"
Utility	3.20m x 1.80m	10'6" x 5'11"
WC	1.8m X 1.35m	5'11" x 4'5"

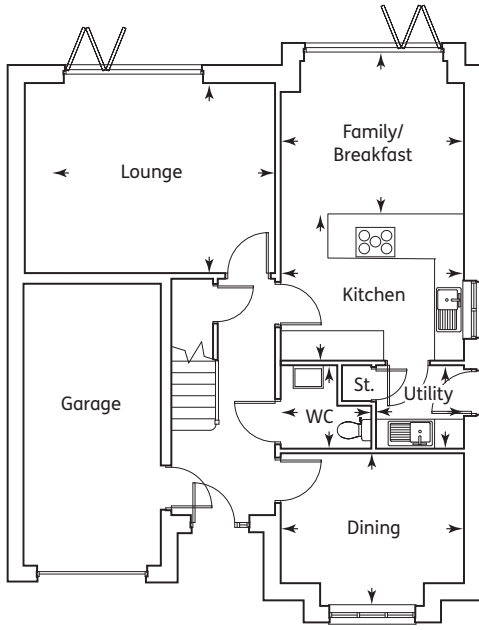
First Floor



Master Bedroom	4.10m x 3.69m	13'5" x 12'1"
Ensuite 1	2.74m x 1.20m	8'11" x 3'11"
Bedroom 2	4.04m x 2.91m	13'3" x 9'6"
Ensuite 2	2.25m x 1.20m	7'4" x 3'11"
Bedroom 3	3.12m x 2.67m	10'2" x 8'9"
Bedroom 4	3.89m x 3.36m	12'9" x 11'0"
Bedroom 5	3.89m x 2.63m	12'9" x 8'7"
Bathroom	2.95m x 1.90m	9'8" x 6'3"

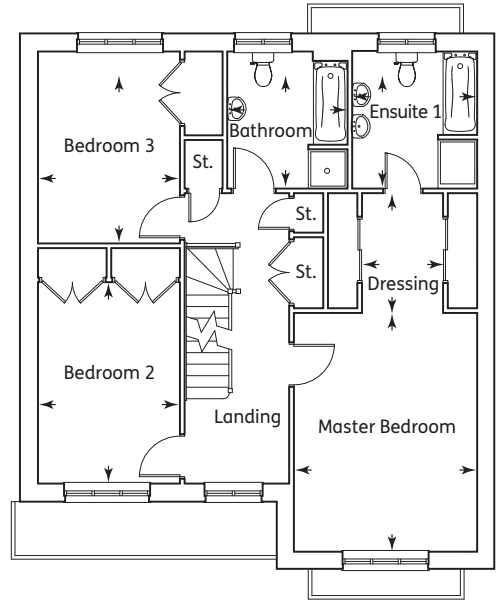


The Eden
5 Bedroom Home



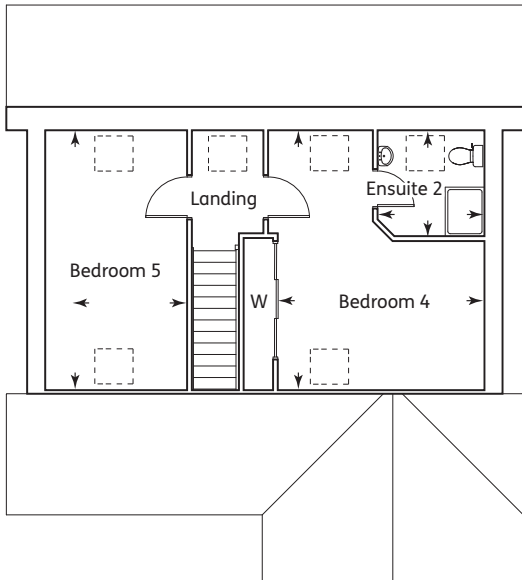
Ground Floor

Family/Breakfast	3.73m x 2.68m	12'3" x 8'9"
Kitchen	3.73m x 2.97m	12'3" x 9'9"
Lounge	5.28m x 3.87m	17'3" x 12'9"
Dining	3.73m x 2.65m	12'3" x 8'8"
W.C.	1.85m x 1.70m	6'1" x 5'7"
Utility	1.79m x 1.70m	5'10" x 5'7"



First Floor

Master Bedroom	4.86m x 3.79m	15'11" x 12'3"
Ensuite 1	2.80m x 2.54m	9'2" x 8'4"
Dressing Area	2.44m x 1.66m	8'0" x 5'5"
Bedroom 2	4.10m x 2.90m	13'5" x 9'6"
Bedroom 3	3.91m x 2.89m	12'10" x 9'6"
Bathroom	2.79m x 2.45m	9'2" x 8'0"



Second Floor

Bedroom 4	4.21m x 3.04m	13'9" x 9'11"
Ensuite 2	2.18m x 2.15m	7'2" x 7'1"
Bedroom 5	5.30m x 2.89m	17'4" x 9'6"

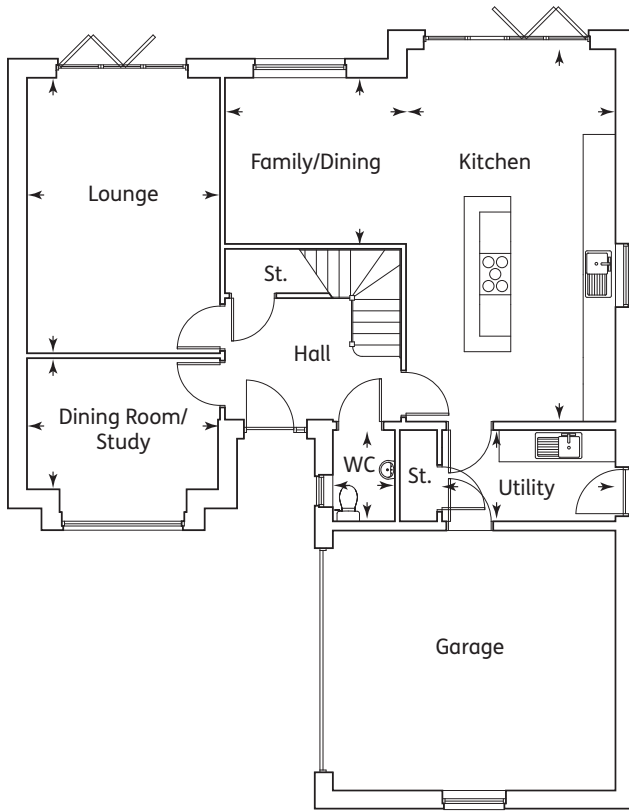


The Teviot
5 Bedroom Home

EPC Rating

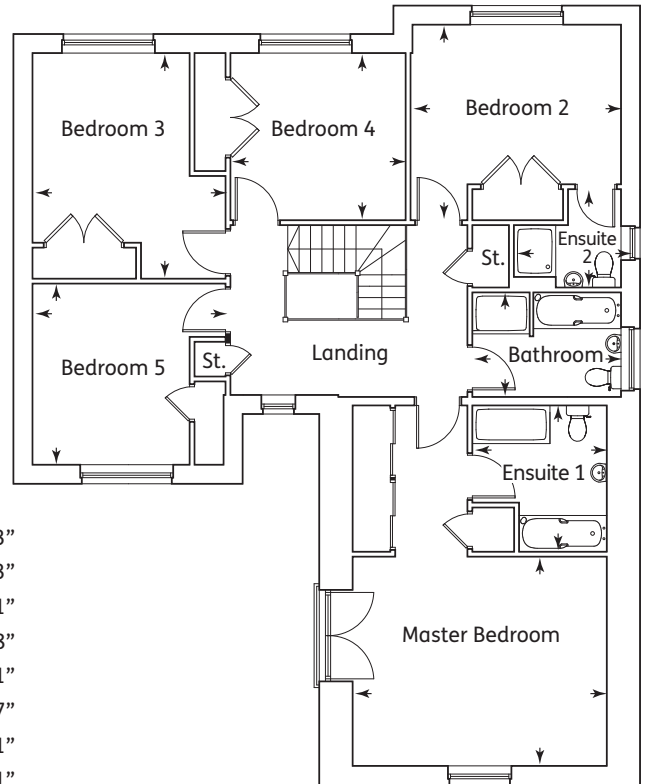


The Tay – 2228 sq ft 215 sqm



Ground Floor

Family/Dining	3.53m x 3.19m	11'7" x 10'5"
Kitchen	7.16m x 4.03m	23'5" x 13'2"
Lounge	5.03m x 3.69m	17'4" x 12'1"
Dining Room/Study	3.69m x 2.53m	12'1" x 8'4"
WC	1.80m x 1.19m	5'11" x 3'11"
Utility	3.86m x 1.80m	12'8" x 5'11"



First Floor

Master Bedroom	5.15m x 4.04m	16'10" x 13'3"
Ensuite 1	2.85m x 2.84m	9'4" x 9'3"
Bedroom 2	4.03m x 3.08m	13'2" x 10'1"
Ensuite 2	2.19m x 1.11m	7'2" x 3'8"
Bedroom 3	3.66m x 3.03m	12'0" x 9'11"
Bedroom 4	3.42m x 3.23m	11'2" x 10'7"
Bedroom 5	3.50m x 3.03m	11'5" x 9'11"
Bathroom	2.94m x 2.12m	9'7" x 6'11"



The Tay
5 Bedroom Home



KINGS MEADOW, IRVINE

External & Internal Specification

KEY ✓ - Standard C - Customer Choice (subject to build stage)

	Carrick	Cromarty	Carron	Leven	Etive	Dochart	Tummel	Ness	Helmisdale	Eden	Teviot	Toy
EXTERNAL SPECIFICATION												
Elevations												
Elevations Roughcast finish to external walls (colour plot specific)	✓	✓	✓	✓	✓	✓	✓	✓	✓	✓	✓	✓
Base course & feature walling (colour plot specific reconstituted stone)	✓	✓	✓	✓	✓	✓	✓	✓	✓	✓	✓	✓
Concrete interlocking roof tiles (colour plot specific)*	✓	✓	✓	✓	✓	✓	✓	✓	✓	✓	✓	✓
UPVC fascias and soffits (colour white)	✓	✓	✓	✓	✓	✓	✓	✓	✓	✓	✓	✓
Rainwater goods (colour black)	✓	✓	✓	✓	✓	✓	✓	✓	✓	✓	✓	✓
Solar photovoltaic panels on roof	✓	✓	✓	✓	✓	✓	✓	✓	✓	✓	✓	✓
1.8m high screen Fencing to rear garden & side	✓	✓	✓	✓	✓	✓	✓	✓	✓	✓	✓	✓
Turfing to front & rear garden	✓	✓	✓	✓	✓	✓	✓	✓	✓	✓	✓	✓
Windows & French Doors												
UPVC double glazed (colour white)	✓	✓	✓	✓	✓	✓	✓	✓	✓	✓	✓	✓
Silver spacer bars, white ironmongery	✓	✓	✓	✓	✓	✓	✓	✓	✓	✓	✓	✓
INTERNAL SPECIFICATION												
Decoration												
2.4m high ceilings throughout	✓	✓	✓	✓	✓	✓	n/a	n/a	n/a	n/a	n/a	n/a
2.7m high ceilings to ground floor, 2.4m ceilings to upper floor	n/a	n/a	n/a	n/a	n/a	n/a	✓	✓	✓	✓	✓	✓
Emulsion finish to walls (choice of paint colours)	✓	✓	✓	✓	✓	✓	✓	✓	✓	✓	✓	✓
Emulsion finish to smooth ceilings (colour white)	✓	✓	✓	✓	✓	✓	✓	✓	✓	✓	✓	✓
Coving to lounge and lower hall (& dining room, where applicable)	✓	✓	✓	✓	✓	✓	✓	✓	✓	✓	✓	✓
Paint finish to all internal woodwork (colour white)	✓	✓	✓	✓	✓	✓	✓	✓	✓	✓	✓	✓
Internal Doors												
Contemporary ladder internal pass door (colour white)	✓	✓	✓	✓	✓	✓	✓	✓	✓	✓	✓	✓
Satin chrome ironmongery	✓	✓	✓	✓	✓	✓	✓	✓	✓	✓	✓	✓
Wardrobe doors												
Master bedroom - Stylish sliding wardrobe doors with internal shelf and hanging rail	✓	✓	✓	✓	✓	✓	✓	✓	✓	✓	✓	✓
Other Bedrooms - Pass doors with internal shelf and hanging rail (where applicable)	✓	✓	✓	✓	✓	✓	✓	✓	✓	✓	✓	✓
Kitchen												
Fitted kitchen units (per Kitchen Supplier's layout)	C	C	C	C	C	C	C	C	C	C	C	C
Integrated dishwasher and fridge freezer	n/a	✓	✓	✓	✓	✓	✓	✓	✓	✓	✓	✓
Stainless steel 1 1/2 bowl sink with monobloc single lever mixer tap	✓	✓	✓	✓	✓	✓	✓	✓	✓	✓	✓	✓
Stainless steel fan assisted built-under single oven	✓	✓	✓	✓	✓	n/a	n/a	n/a	n/a	n/a	n/a	n/a
Stainless steel built in single oven	n/a	n/a	n/a	n/a	n/a	✓	✓	✓	✓	✓	✓	✓
Stainless steel four burner gas hob with glass splashback	✓	✓	✓	✓	✓	✓	n/a	n/a	n/a	n/a	n/a	n/a
Stainless steel five burner gas hob with glass splashback	n/a	n/a	n/a	n/a	n/a	n/a	✓	✓	n/a	✓	✓	n/a
Stainless steel chimney style cooker hood	✓	✓	✓	✓	✓	✓	✓	✓	n/a	✓	✓	n/a
induction hob with built in extractor	n/a	n/a	n/a	n/a	n/a	n/a	n/a	✓	n/a	n/a	✓	✓
Upstand above worktops to match worktop	C	C	C	C	C	C	C	C	C	C	C	C
Utility Room												
Fitted kitchen units (per Kitchen Supplier's layout)	n/a	✓	✓	✓	✓	✓	✓	✓	✓	✓	✓	✓
Stainless steel single bowl sink with monobloc single lever mixer tap	n/a	✓	✓	✓	✓	✓	✓	✓	✓	✓	✓	✓
Washing machine space with plumbing and electric points	n/a	✓	✓	✓	✓	✓	✓	✓	✓	✓	✓	✓
Upstand above worktops to match worktop	n/a	C	C	C	C	C	C	C	C	C	C	C
Bathroom												
Sanitary ware per layout (colour white)	✓	✓	✓	✓	✓	✓	✓	✓	✓	✓	✓	✓
Resin shower tray (colour white) with glazed enclosure (chrome frame)	n/a	✓	✓	✓	✓	✓	✓	✓	✓	✓	✓	✓
Chrome plated thermostatic shower with multi-spray head	n/a	✓	✓	✓	✓	✓	✓	✓	✓	✓	✓	✓
Ceramic wall tiling full height to shower enclosure	n/a	C	C	C	C	C	C	C	C	C	C	C
Chrome plated monobloc mixer to WHB	✓	✓	✓	✓	✓	✓	✓	✓	✓	✓	✓	✓
Chrome plated bath filler tap	✓	✓	✓	✓	✓	✓	✓	✓	✓	✓	✓	✓
Ceramic wall tiling to half wall height	C	C	C	C	C	C	C	C	C	C	C	C
En suite												
Sanitary ware per layout (colour white)	✓	✓	✓	✓	✓	✓	✓	✓	✓	✓	✓	✓
Resin shower tray (colour white) with glazed enclosure (chrome frame)	✓	✓	✓	✓	✓	✓	✓	✓	✓	✓	✓	✓
Ceramic wall tiling full height to shower enclosure	C	C	C	C	C	C	C	C	C	C	C	C
Chrome plated thermostatic shower with multi-spray head	✓	✓	✓	✓	✓	✓	✓	✓	✓	✓	✓	✓
Chrome plated monobloc mixer to basin	✓	✓	✓	✓	✓	✓	✓	✓	✓	✓	✓	✓
Ceramic wall tiling to half wall height	C	C	C	C	C	C	C	C	C	C	C	C
WC												
Sanitary ware per layout (colour white)	✓	✓	✓	✓	✓	✓	✓	✓	✓	✓	✓	✓
Chrome plated monobloc mixer to basin	✓	✓	✓	✓	✓	✓	✓	✓	✓	✓	✓	✓
Ceramic wall tiling splashback at basin	C	C	C	C	C	C	C	C	C	C	C	C
Heating												
Gas fired heating system with combination boiler and room stat	✓	✓	n/a	n/a	n/a	n/a	n/a	n/a	n/a	n/a	n/a	n/a
Gas fired heating system with system boiler and unvented hot water cylinder	n/a	n/a	✓	✓	✓	✓	✓	✓	✓	✓	✓	✓
Radiators with thermostatic valves (as detailed on layout)	✓	✓	✓	✓	✓	✓	✓	✓	✓	✓	✓	✓
Electrical												
Downlights to kitchen, bathroom, ensuite & wc (as detailed on layout)	✓	✓	✓	✓	✓	✓	✓	✓	✓	✓	✓	✓
TV point to lounge and master bedroom (& family room, where applicable)	✓	✓	✓	✓	✓	✓	✓	✓	✓	✓	✓	✓
BT point to lounge and master bedroom	✓	✓	✓	✓	✓	✓	✓	✓	✓	✓	✓	✓
Chrome Sockets / Switches to ground floor	✓	✓	✓	✓	✓	✓	✓	✓	✓	✓	✓	✓
Electric car charging cabling	✓	✓	✓	✓	✓	✓	✓	✓	✓	✓	✓	✓

These particulars are for general information only. They do not form part of any contract. Dawn Homes reserve the right to amend or vary the layout or specification without prior notice. Please contact our Development Consultant for further details. Computer generated images are shot from an imaginary viewpoint within an open space and are for reference only. The illustration shown is a typical Dawn home of this type, but there are however variances from site to site. External finishes, landscaping may vary throughout the development. Properties may also be built handed (mirror image). Please ask a Development Consultant for further details. Floor plans show the typical layout of this house type. For exact dimensions and floor plan differences consult a Development Consultant. All dimensions are approximate and are not shown to scale. *Consult Development Consultant for plot specific material details.



Finishing Touches

Buy from plan, and have your own personal choices fitted in your new home. Add some optional extras to enhance the high specification which comes as standard with your new Dawn home.

The minute you move in it feels like home.





Dawn Homes Ltd
220 West George Street
Glasgow G2 2PG
T: 0141 285 6700
E: homes@dawn-homes.co.uk
www.dawn-homes.co.uk